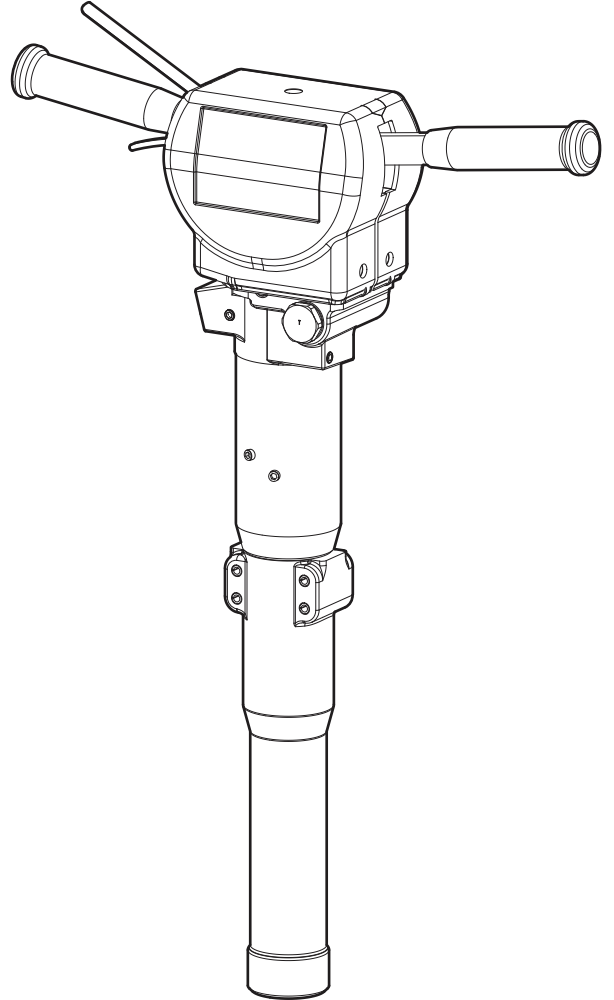


Spare parts list

Hydraulic spike driver



Contents

General information.....	5
Spare parts list.....	6
LH 280 E SD.....	8
Nose part spike driver.....	12
Handle standard.....	14
E-handle.....	16
Tightening torque.....	18
Accessories.....	19
Hoses and couplings.....	19
Hoses and couplings.....	22
Kits.....	23
Label kit.....	23
Seal kit.....	24
Trigger valve kit.....	25
Accumulator kit.....	26

General information

This spare parts list applies to the following:

Part number	Description
1801364373	Handheld hydraulic spike driver LH 280 E SD

Fitted with JIC connectors and delivered without tailhoses.

Use only authorized parts. Any damage or malfunction caused by the use of unauthorized parts is not covered by Warranty or Product Liability. Any unauthorized use or copying of the contents or any part thereof is prohibited. This applies in particular to trademarks, model denominations, part numbers, and drawings.

Instructions for use

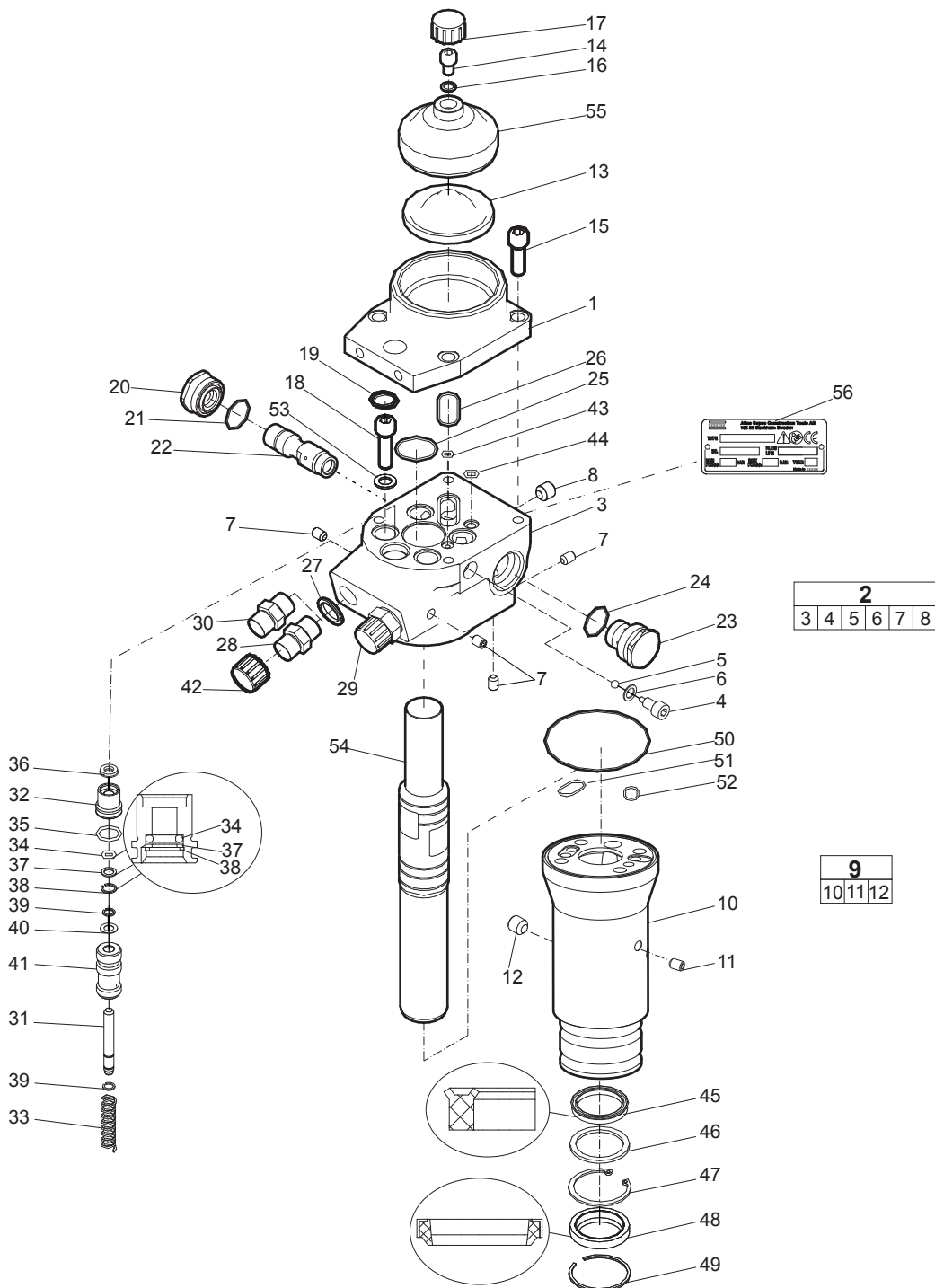
This spare parts list contains no safety regulations and is merely intended to assist in the ordering of spare parts.

For information about operating, servicing, or repairing, the relevant Safety and operating instructions must be consulted at all costs.

Please observe the safety instructions listed in the relevant Safety and operating instructions!

Spare parts list

LH 280 E SD



No.	Description	Remark	Quantity	Part number
1	Accumulator body		1	3371 8210 27
2(3-8)	Valve housing, complete		1	3371 8210 26
3	Valve housing		1	3371 8210 73
4	Check valve screw		1	3371 8201 15
5	Ball		1	3371 8207 17
6	Seal ring	Ø 0.35 x 0.55 x 0.04 in. Ø 9 x 14 x 1 mm	1	3371 8207 18
7	Fitting		5	3371 8147 33
8	Fitting		2	3371 8131 41
9(10-12)	Cylinder, complete		1	3371 8210 29
10	Cylinder		1	-
11	Fitting		1	3371 8147 33
12	Fitting		1	3371 8131 41
13	Diaphragm		1	3371 8140 52
14	Charging screw		1	3371 8131 03
15	Screw	M10 x 30 mm	4	3371 8177 20
16	Seal ring	Ø 0.34 x 0.51 x 0.04 in. Ø 8.7 x 13 x 1 mm	1	3371 8147 09
17	Protective cap	M24 x 1.5 mm	1	3371 8137 10
18	Screw	M10 x 35 mm	4	3371 8147 23
19	O-ring	Ø 0.71 x 0.08 in. Ø 18 x 2 mm	4	3371 8207 03
20	Spool socket		1	3371 8202 67
21	O-ring	Ø 0.94 x 0.06 in. Ø 24 x 1.5 mm	1	3371 8207 02
22	Spool		1	3371 8202 65
23	Guide socket		1	3371 8202 66
24	O-ring	Ø 0.99 x 0.07 in. Ø 25.1 x 1.8 mm	1	3371 8207 62
25	O-ring	Ø 1.18 x 0.08 in. Ø 30 x 2 mm	1	3371 8207 04
26	O-ring	Ø 1.26 x 0.08 in. Ø 32 x 2 mm	1	3371 8207 05
27	Seal ring	½ in. BSP 12.5 mm BSP	2	3371 8057 14
28	Nipple, standard	(T) For 40 lpm ½ in. JIC	1	3371 8151 35
29	Nipple, standard	(T) For 40 lpm ½ in. JIC	1	3371 8151 35
30	Nipple, standard	(T) For 30 lpm ½ in. JIC	1	3371 8180 12
31	Trigger rod		1	3371 8201 36
32	Packing gland		1	3371 8141 20
33	Spring		1	3371 8201 37
34	O-ring	Ø 0.33 x 0.09 in. Ø 8.3 x 2.4 mm	1	3371 8147 00
35	O-ring	Ø 0.64 x 0.09 in. Ø 16.3 x 2.4 mm	1	3371 8147 02
36	Seal	Ø 0.71 x 0.55 x 0.14 x 0.20 in. Ø 18 x 14 x 3.5 x 5 mm	1	3371 8055 03
37	Back-up ring		1	3371 8147 01
38	Circlip		1	3371 8147 12
39	Circlip		2	3371 8147 32
40	Shim	PS 0.31 x 0.55 x 0.02 in. PS 8 x 14 x 0.5 mm	1	3371 8207 00
41	Trigger spool		1	3371 8201 08
42	Protective cap	½ in. BSP 12.5 mm BSP	2	3371 8137 09
43	O-ring	Ø 0.24 x 0.08 in. Ø 6 x 2 mm	1	3371 8177 57

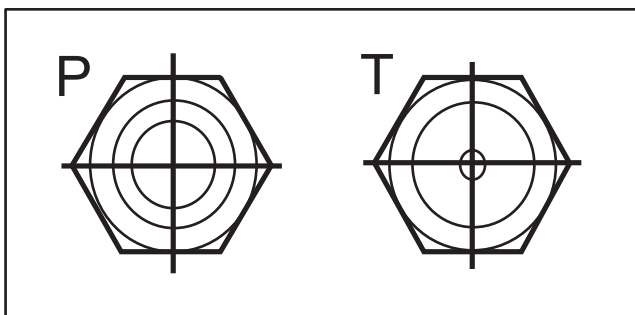
No.	Description	Remark	Quantity	Part number
44	O-ring	Ø 0.31 x 0.08 in. Ø 8 x 2 mm	1	3376 1000 84
45	Seal	Ø 1.26 x 1.57 x 0.24 in. Ø 32 x 40 x 6 mm	1	3371 8201 76
46	Back-up washer	Ø 1.29 x 1.77 x 0.10 in. Ø 32.7 x 45 x 2.5 mm	1	3371 8201 67
47	Lock ring		1	3371 8207 27
48	Wiper		2	3371 8207 08
49	Lock ring		2	3371 8207 40
50	O-ring	Ø 3.23 x 0.06 in. Ø 82 x 1.5 mm	1	3371 8207 25
51	O-ring	Ø 0.63 x 0.06 in. Ø 16 x 1.5 mm	1	3371 8207 26
52	O-ring	Ø 0.51 x 0.06 in. Ø 13 x 1.5 mm	1	3371 8147 49
53	Back-up washer		4	3371 8157 35
54	Piston		1	3371 8211 16
55	Accumulator cover		1	3371 8140 66
56	Data plate		1	-

T-Connection

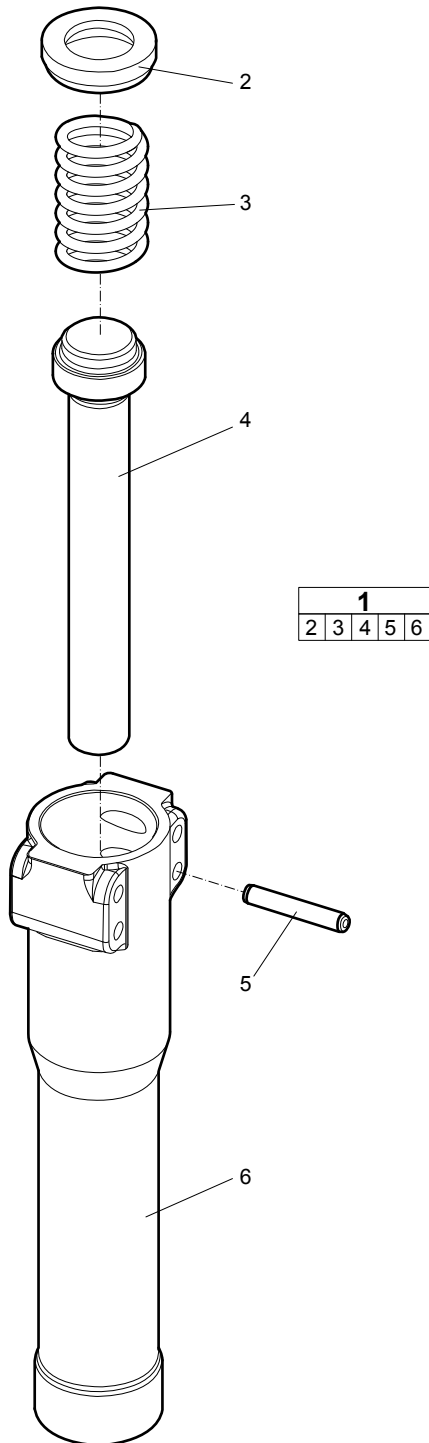
Oil flow	Orifice	½ in. BSP	½ in. JIC
28-32 lpm. 7.4-8.4 gpm.	4.2 mm.	3371 8180 13	3371 8180 12
33-36 lpm. 8.7-9.5 gpm.	5.2 mm.	3371 8181 20	3371 8181 22
37-40 lpm. 9.8-10.6 gpm.	None	3371 8057 11	3371 8151 35

P-Connection

½ in. BSP	½ in. JIC
3371 8057 11	3371 8151 35



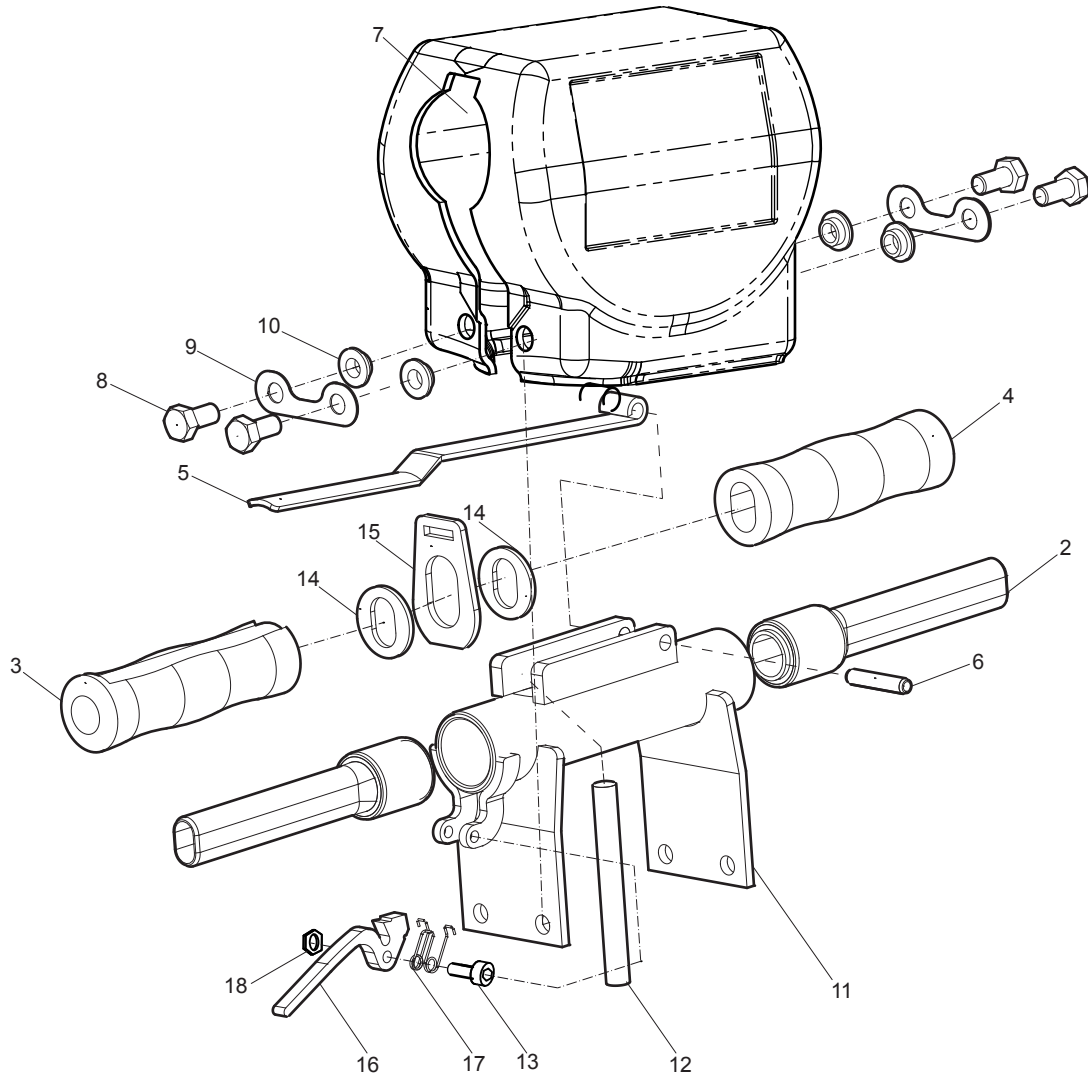
Nose part spike driver



No.	Description	Remark	Quantity	Part number
1(2-6)	Nose part, complete		1	3371 8210 74
2	Washer		1	3371 8203 01
3	Spring		1	3371 8203 00
4	Anvil		1	3371 8202 98
5	Roll pin	16 x 60 mm. 0.3 x 2.36 in.	4	3371 8137 13
6	Nose part	Spike driver	1	3371 8202 99

Handle standard

1																	
2	3	4	5	6	7	8	9	10	11	12	13	14	15	16	17	18	



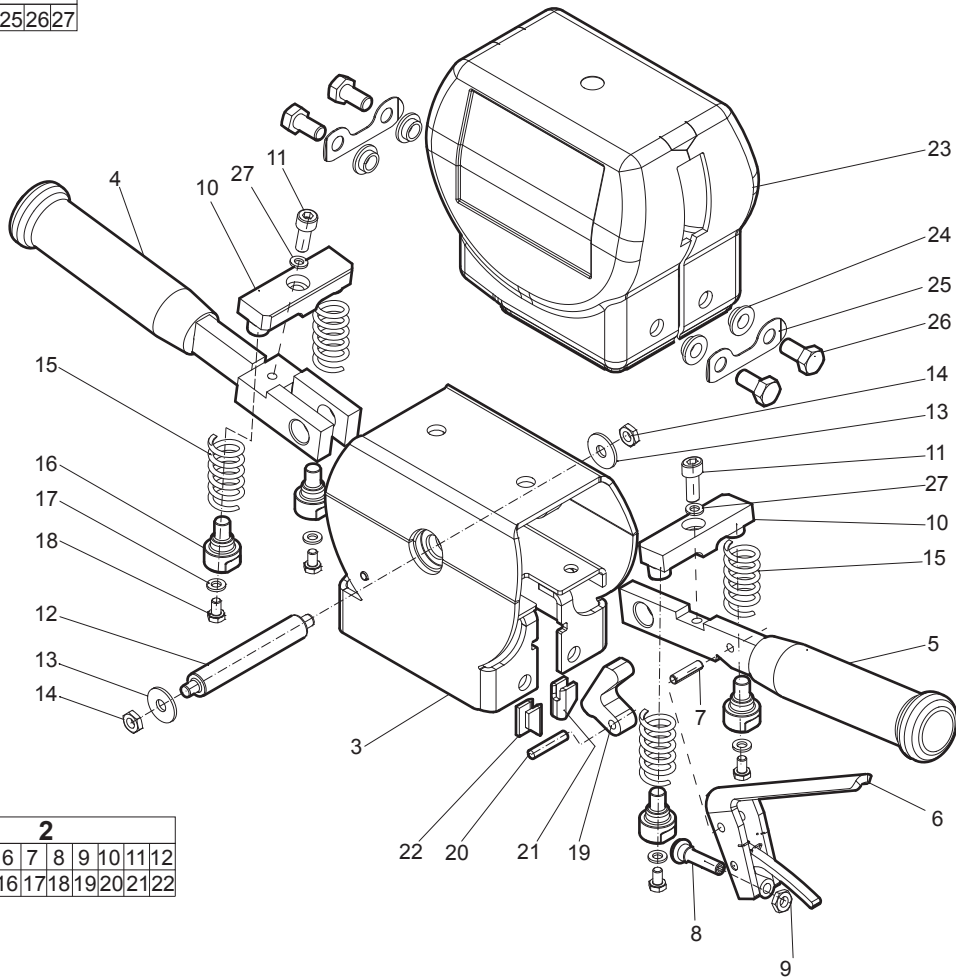
No.	Description	Remark	Quantity	Part number
1(2-18)	Handle standard, complete	With plastic cover	1	3371 8212 08
2	Handle standard		2	3371 8202 04
3	Rubber handle		1	3371 8201 35
4	Rubber handle		1	3371 8201 34
5	Trigger	Standard	1	3371 8202 38

No.	Description	Remark	Quantity	Part number
6	Roll pin	Ø 0.31 x 1.6 in. Ø 8 x 40 mm	1	3371 8157 33
7	Top cover		1	3371 8212 02
8	Screw	M10 x 20 mm	4	3371 8157 22
9	Nab		2	3371 8151 31
10	Spacer		4	3371 8151 13
11	Bracket		1	3371 8202 03
12	Nylon guide		1	3371 8202 07
13	Screw	M6 x 30 mm	1	3378 2060 44
14	Washer nylon	Ø 0.83 x 1.46 x 0.12 in. Ø 21 x 37 x 3 mm	2	3371 8207 47
15	Lock plate		1	3371 8202 37
16	Safety trigger		1	3371 8202 36
17	Spring		1	3371 8201 52
18	Nut	M6	1	3371 8147 16

E-handle

1						
2	23	24	25	26	27	

2											
3	4	5	6	7	8	9	10	11	12	13	14
15	16	17	18	19	20	21	22				



No.	Description	Remark	Quantity	Part number
1(2,23-27)	E-handle, complete	With plastic cover	1	3371 8212 06
2(3-22)	E-handle, complete	Without plastic cover	1	3371 8210 65
3	Frame		1	3371 8212 05
4	Handle		1	3371 8211 73
5	Handle		1	3371 8211 72
6	Trigger lever		1	3371 8212 00
7	Roll Pin	Ø 0.24 x 0.94 in. Ø 6 x 24 mm	1	3371 8207 12
8	Thrust pad	With screw M8	1	3371 8210 68
9	Nut	M8	1	3371 8207 22
10	Stopper		2	3371 8211 77
11	Screw	M8 x 25 mm	2	3371 8051 55
12	Pin		1	3371 8211 84
13	Washer	Ø 0.31 in. Ø 8 mm	2	3377 1040 08
14	Nut	M8	2	3371 8207 22
15	Spring		4	3371 8211 78
16	Spring guide		4	3371 8211 75
17	Washer	Ø 0.24 in. Ø 6 mm	4	3377 0004 07
18	Screw	M6 x 10 mm	4	3371 8177 24
19	Trigger pawl		1	3371 8211 76
20	Pin	Ø 0.24 x 1.18 in. Ø 6 x 30 mm	1	3371 8207 11
21	Pin latch right		1	3371 8201 47
22	Pin latch left		1	3371 8201 48
23	Top cover		1	3371 8211 83
24	Spacer		4	3371 8151 13
25	Nab		2	3371 8151 31
26	Screw	M10 x 25 mm	4	3378 0341 02
27	Lock washer	Ø 0.31 in. Ø 8 mm	2	3315 0195 04

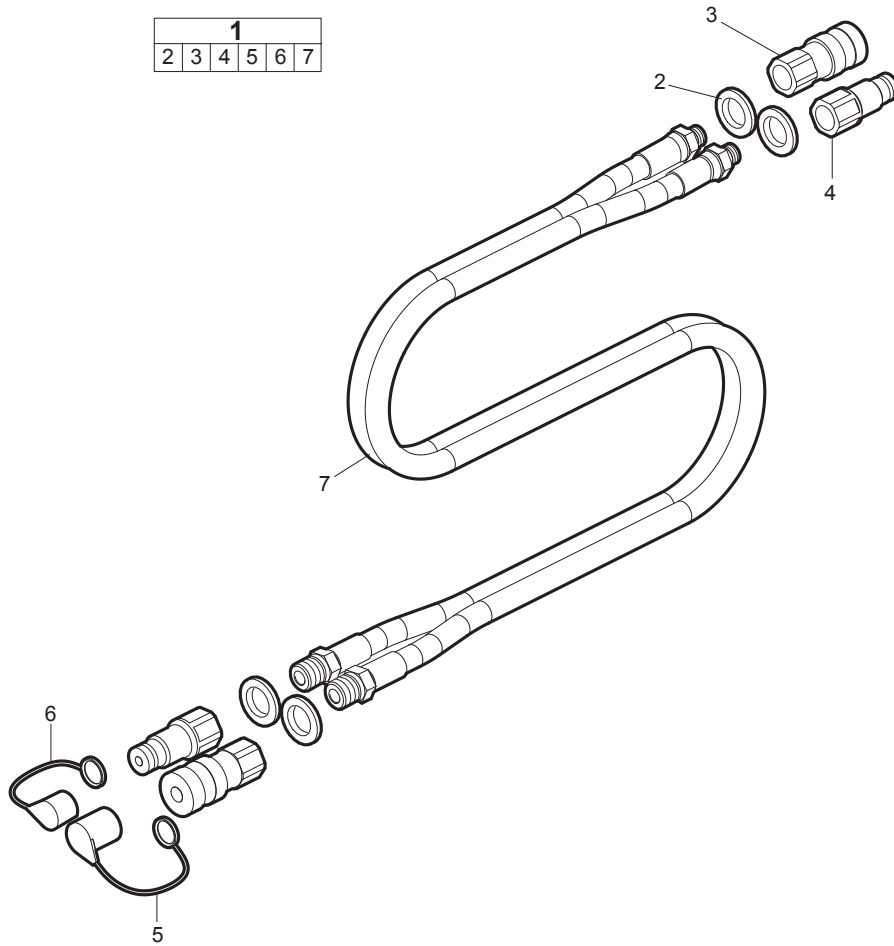
Tightening torque

Description	Tightening torque (Nm)	Remark	Part number
Screw	70	LOCTITE® 245™	3371 8177 20
Screw	80	LOCTITE® 245™	3371 8147 23
Guide socket	100	LOCTITE® 245™	3371 8202 66
Guide socket HBP	100	LOCTITE® 245™	3371 8211 13
Spool socket	100	LOCTITE® 245™	3371 8202 67
Nipple	55	-	3371 8057 11
Fitting	-	LOCTITE® 245™	3371 8147 33
Fitting	-	LOCTITE® 245™	3371 8131 41
Bushing	-	LOCTITE® 648 (275)™	3371 8201 91
Screw	60	LOCTITE® 245™	3371 8147 24
Bushing	-	LOCTITE® 648 (275)™	3371 8202 18
Bushing	-	LOCTITE® 648 (275)™	3371 8202 12
Bushing	-	LOCTITE® 648 (275)™	3371 8201 94
Charging screw	30	-	3371 8131 03

LOCTITE is a registered trademark of Henkel Corporation. 245, 275, 648 are trademarks of Henkel Corporation.

Accessories

Hoses and couplings



No.	Description	Remark	Quantity	Part number
1(2-7)	Twin extension hose, complete		1	3371 8010 87
2	Seal ring	Bonded seal ½ in. BSP	1	3371 8057 14
3	Quick release coupling	Flat face, Female ½ in. BSP	1	3371 8051 33
4	Quick release coupling	Flat face, Male ½ in. BSP	1	3371 8051 34
5	Protective cap	For 1/2 in. Female QRC	1	3371 8057 33
6	Protective cap	For 1/2 in. Male QRC	1	3371 8057 32
7	Twin extension hose	Ø ½ in. Length = 23 ft. Ø 12.5 mm Length = 7 m	1	3371 8030 52

Hoses and couplings

Description	Remark	Quantity	Part number
Connection hose, complete	JIC connection	1	3371 8011 86
Hose	Ø ½ in. L = 16 in. Ø 12.5 mm L = 0.4 m, ¾ unf	2	3371 8030 73
O-ring	16.36 x 2.21 mm	2	3377 0217 08
Quick-release coupling	Female ½ in. ¾ unf	1	3371 8051 60
Quick-release coupling	Male ½ in. ¾ unf	1	3371 8051 61
Protective cap	Female	1	3371 8057 33
Protective cap	Male	1	3371 8057 32
Adaptors	BSP connection		-
Nipple	(T) For 40 lpm ½ in. BSP	1	3371 8057 11
Nipple	(P) For 40 lpm ½ in. BSP	1	3371 8057 11
Nipple	(T) For 30 lpm ½ in. BSP	1	3371 8180 13

Kits

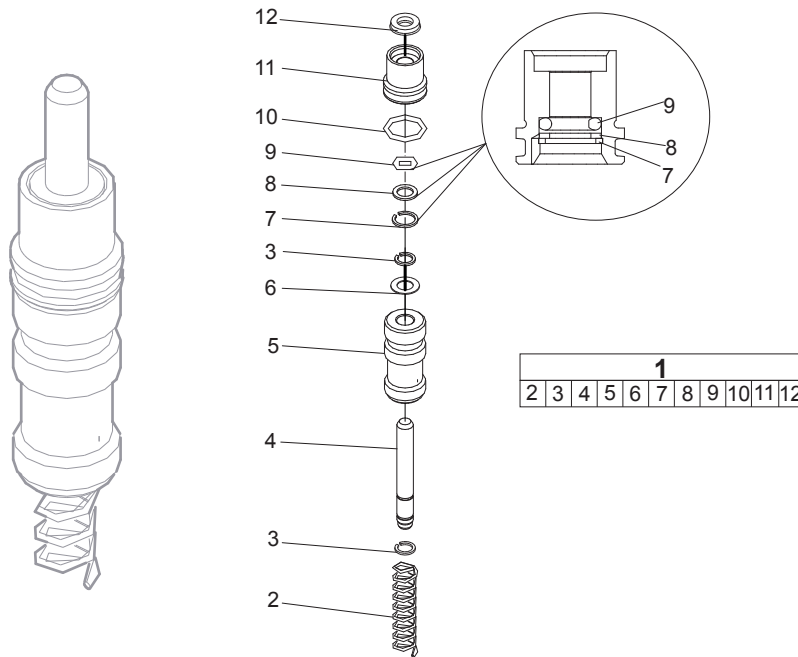
Label kit

Description	Remark	Quantity	Part number
Label kit		1	3371 8210 97
Safety label		1	3371 8960 61
Pressure charge	"N ₂ "	1	3371 8960 62
Product label	"Atlas Copco"	2	3371 8960 63
Product label	"LH 280 E"	1	3371 8972 66
Product label	"SD"	1	3371 8973 06
Noise level label	20 lpm	1	3371 8960 00
EHTMA Category E	30 lpm	1	3371 8960 49

Seal kit

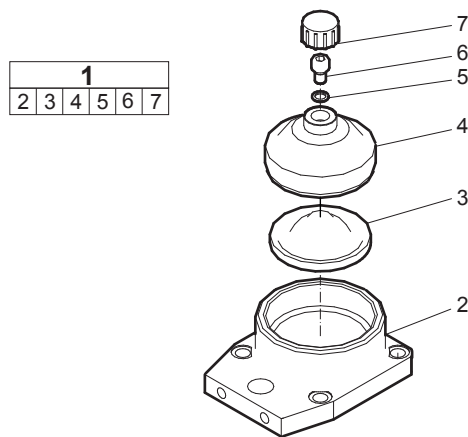
Description	Remark	Quantity	Part number
Seal kit		1	3371 8200 89
Seal ring	Ø 0.34 x 0.51 x 0.04 in. Ø 8.7 x 13 x 1 mm	1	3371 8147 09
Protective cap	M24 x 1.5 mm	1	3371 8137 10
O-ring	Ø 0.94 x 0.06 in. Ø 24 x 1.5 mm	1	3371 8207 02
O-ring	Ø 0.71 x 0.08 in. Ø 18 x 2 mm	4	3371 8207 03
O-ring	Ø 1.18 x 0.08 in. Ø 30 x 2 mm	1	3371 8207 04
O-ring	Ø 1.26 x 0.08 in. Ø 32 x 2 mm	1	3371 8207 05
O-ring	Ø 0.99 x 0.07 in. Ø 25.1 x 1.8 mm	1	3371 8207 62
Lock ring		1	3371 8207 40
Seal	Ø 1.26 x 1.57 x 0.24 in. Ø 32 x 40 x 6 mm	1	3371 8201 76
Wiper	Ø 1.26 x 1.77 x 0.28 x 0.39 in. Ø 32 x 45 x 7 x 10 mm	1	3371 8207 08
Seal ring	½ in. BSP	2	3371 8057 14
Circlip		2	3371 8147 32
Shim	PS 0.31 x 0.55 x 0.02 in. PS 8 x 14 x 0.5 mm	1	3371 8207 00
O-ring	Ø 0.33 x 0.09 in. Ø 8.3 x 2.4 mm	1	3371 8147 00
O-ring	Ø 0.64 x 0.09 in. Ø 16.3 x 2.4 mm	1	3371 8147 02
Seal		1	3371 8055 03
Back-up ring		1	3371 8147 01
Circlip		1	3371 8147 12
O-ring	Ø 0.24 x 0.08 in. Ø 6 x 2 mm	1	3371 8177 57
O-ring	Ø 0.31 x 0.08 in. Ø 8 x 2 mm	1	3371 1000 84
Seal ring	Ø 0.35 x 0.55 x 0.04 in. Ø 9 x 14 x 1 mm	1	3371 8207 18
O-ring	Ø 3.23 x 0.06 in. Ø 82 x 1.5 mm	1	3371 8207 25
O-ring	Ø 0.63 x 0.06 in. Ø 16 x 1.5 mm	1	3371 8207 26
O-ring	Ø 0.51 x 0.06 in. Ø 13 x 1.5 mm	1	3371 8147 49
Back-up washer	Ø 1.29 x 1.77 x 0.10 in. Ø 32.7 x 45 x 2.5 mm	1	3371 8201 67
Lock ring		1	3371 8207 27
Nab		2	3371 8151 31
O-ring	Ø 1.10 x 0.12 in. Ø 28 x 3 mm	1	3371 8217 09
Back-up ring	1.30 x 1.10 x 0.06 in. 33.1 x 28 x 1.5 mm	1	3371 8217 10
Air filter		1	3371 8212 42

Trigger valve kit



No.	Description	Remark	Quantity	Part number
1(2-12)	Trigger valve kit		1	3371 8200 53
2	Spring		1	3371 8201 37
3	Circlip		2	3371 8147 32
4	Trigger rod		1	3371 8201 36
5	Trigger spool		1	3371 8201 08
6	Shim	PS 0.31 x 0.55 x 0.02 in. PS 8 x 14 x 0.5 mm	1	3371 8207 00
7	Circlip		1	3371 8147 12
8	Back-up ring		1	3371 8147 01
9	O-ring	Ø 0.33 x 0.09 in. Ø 8.3 x 2.4 mm	1	3371 8147 00
10	O-ring	Ø 0.64 x 0.09 in. Ø 16.3 x 2.4 mm	1	3371 8147 02
11	Packing gland		1	3371 8141 20
12	Seal		1	3371 8055 03

Accumulator kit



No.	Description	Remark	Quantity	Part number
1(2-7)	Accumulator kit		1	3371 8210 24
2	Accumulator body		1	3371 8210 27
3	Diaphragm		1	3371 8140 52
4	Accumulator cover		1	3371 8140 66
5	Seal ring	Ø 0.34 x 0.51 x 0.04 in. Ø 8.7 x 13 x 1 mm	1	3371 8147 09
6	Charging screw		1	3371 8131 03
7	Protective cap		1	3371 8137 10

Any unauthorized use or copying of the contents or any part thereof is prohibited.
This applies in particular to trademarks, model denominations, part numbers, and
drawings.

© 2012 Atlas Copco Construction Tools AB | No. 3392 5247 01 | 2012-12-04

Atlas Copco

www.atlascopco.com